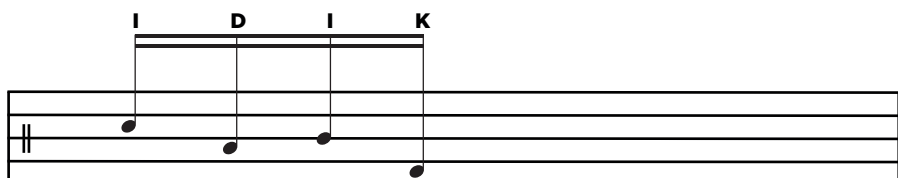
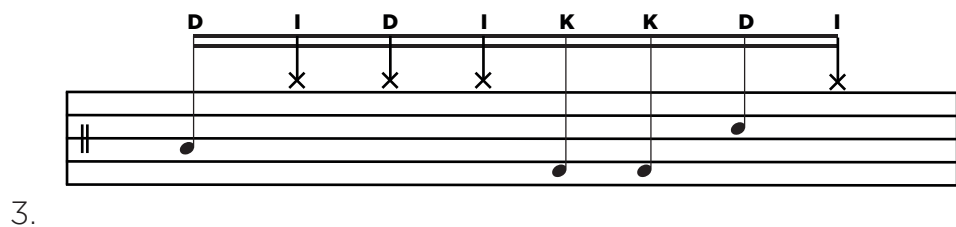
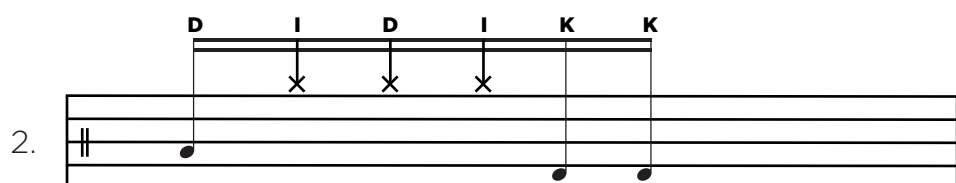
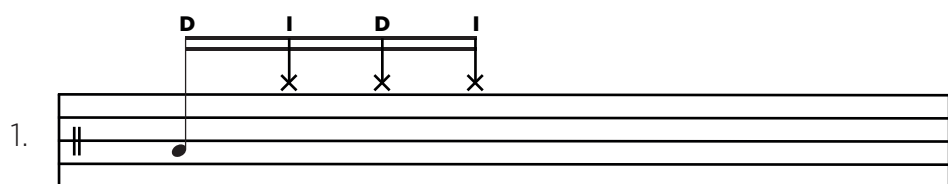


CLASE #22: MI PRIMER FILL

EJEMPLO:



EJERCICIO:



4.

D I D I K K D I D I

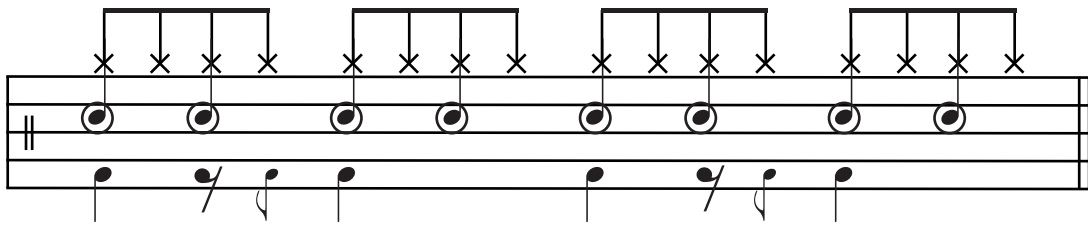
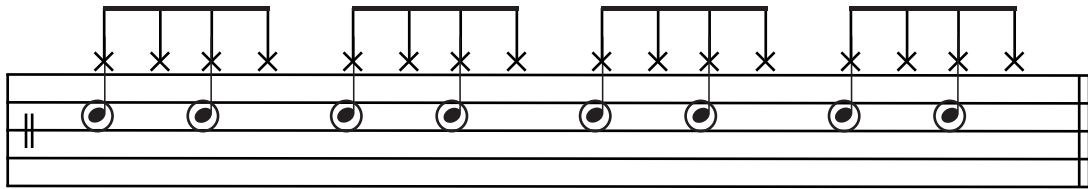
5.

D I D I K K D I D I K K

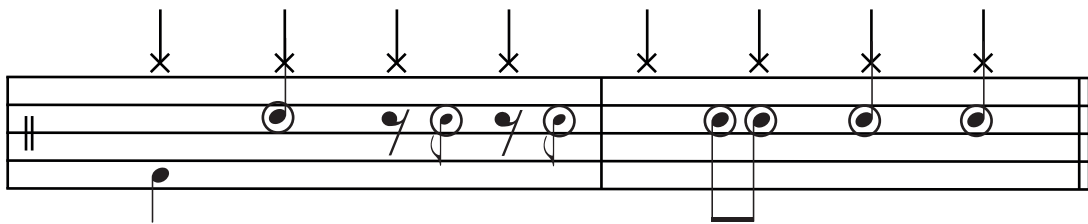
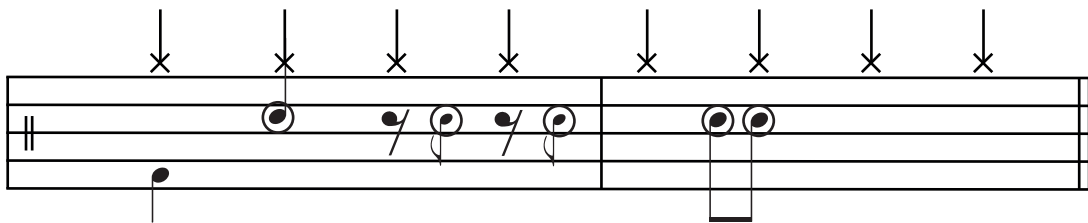
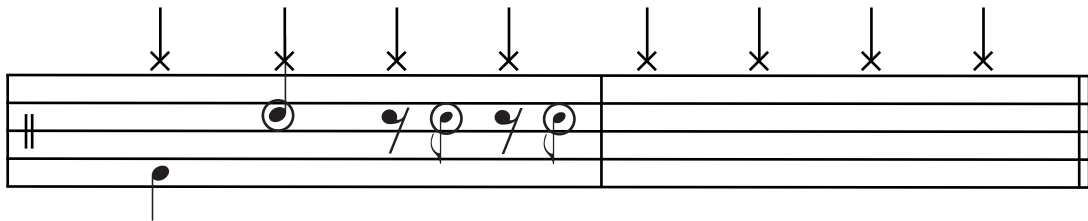
6.

D I D I K K D I D I D K K

CLASE #21: TÉCNICA ROBIN



APLICACIÓN EN ESTILO BOSSANOVA:



CLASE #19: RITMOS MUSICALES I

PRIMER RITMO

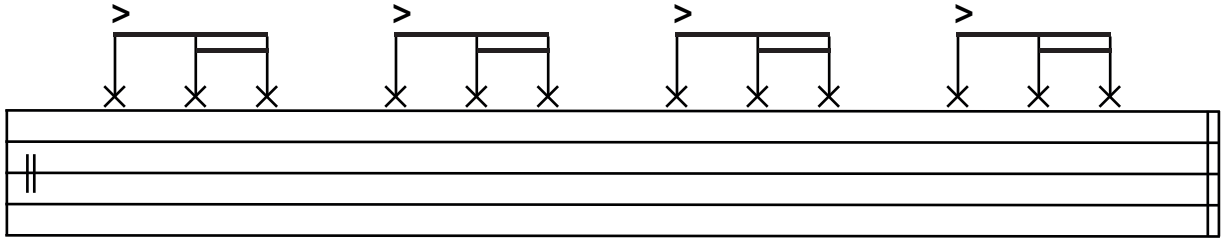
1.

2.

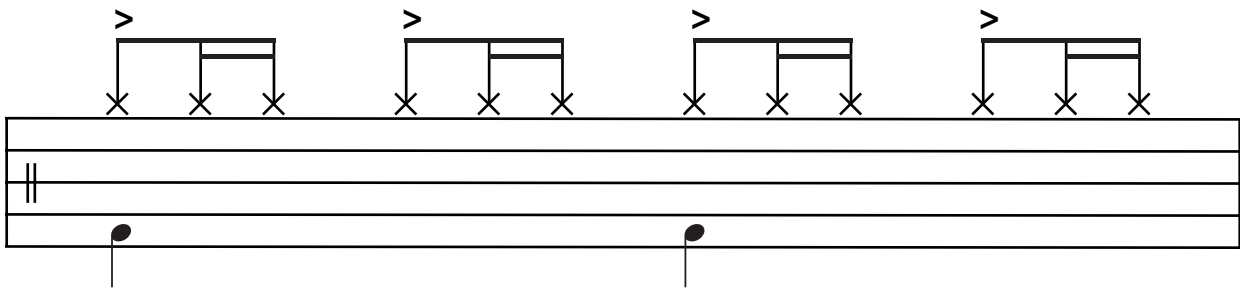
3.

SEGUNDO RITMO

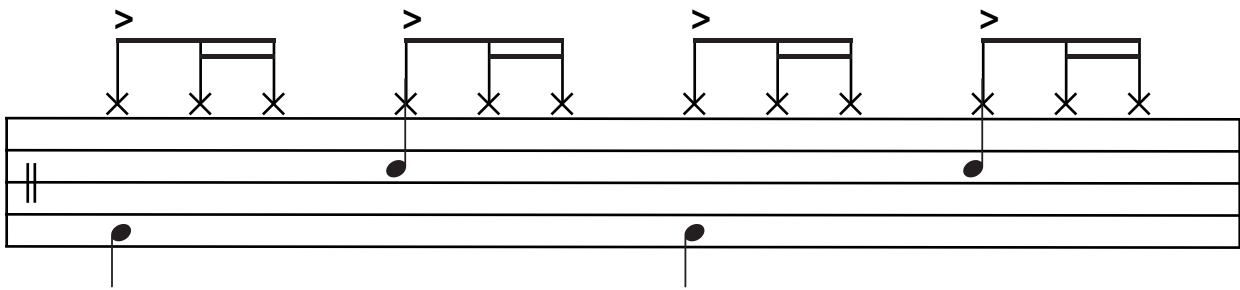
1.



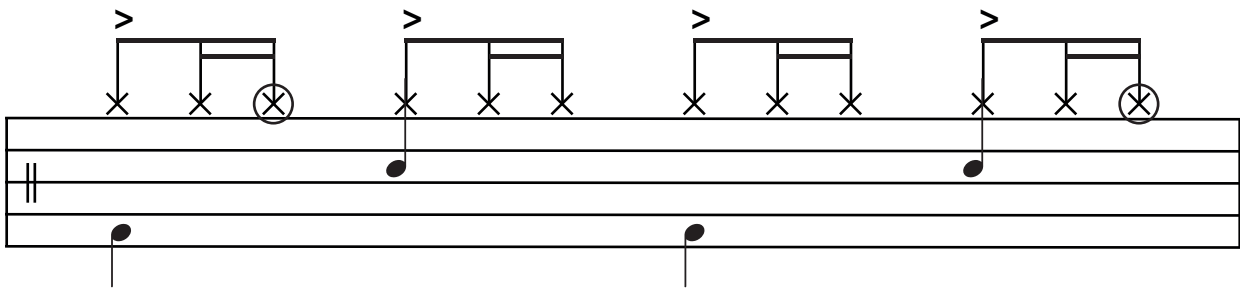
2.



3.



4.



CLASE #26: RITMOS MUSICALES II

EJERCICIO 1

Musical notation for Ejercicio 1. The staff shows a rhythmic pattern of R R L R R L R R L R R L. Above the staff, there are four groups of three notes, each with a bracket above it and the letters R R L above the bracket. The notes are represented by 'x' marks. Below the staff, there is a single note on the first line of the staff.

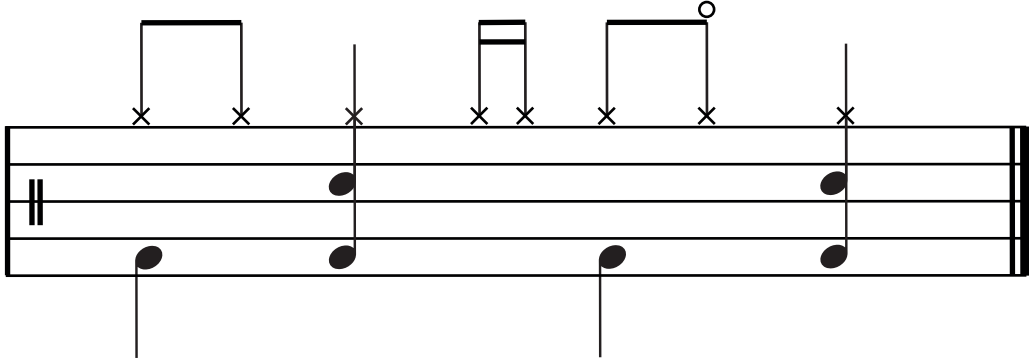
EJERCICIO 2

Musical notation for Ejercicio 2. The staff shows a rhythmic pattern of R R L R R L R R L R R L. Above the staff, there are four groups of three notes, each with a bracket above it and the letters R R L above the bracket. The notes are represented by 'x' marks. Below the staff, there are four notes on the first line of the staff, each with a stem pointing downwards.

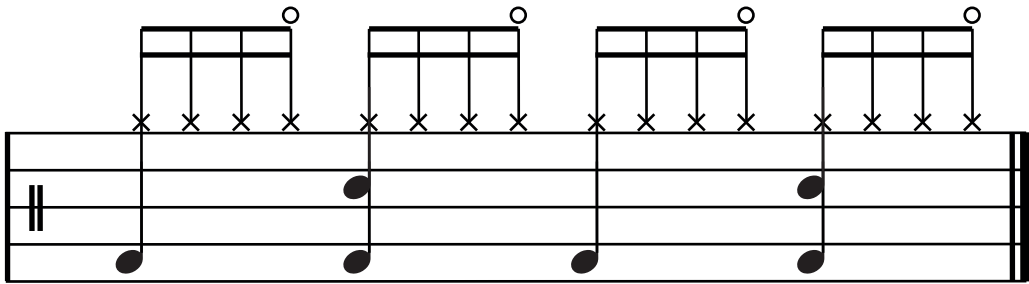
EJERCICIO 3

Musical notation for Ejercicio 3. The staff shows a rhythmic pattern of R R L R R L R R L R R L. Above the staff, there are four groups of three notes, each with a bracket above it and the letters R R L above the bracket. The notes are represented by 'x' marks. Below the staff, there are four notes on the first line of the staff, each with a stem pointing downwards.

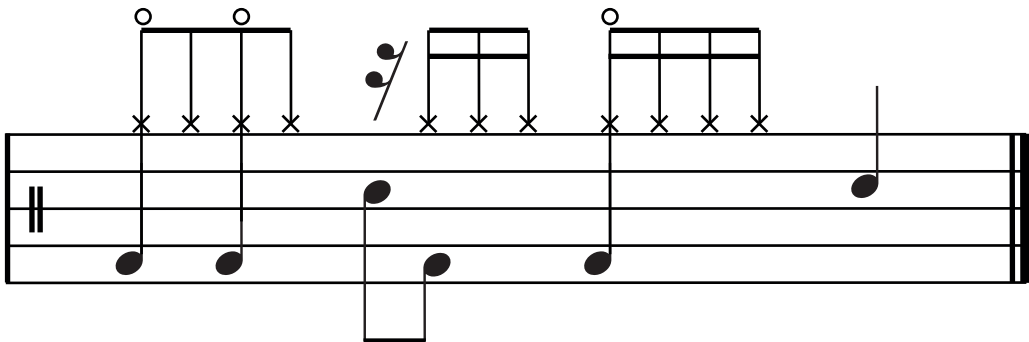
EJERCICIO 4



EJERCICIO 5

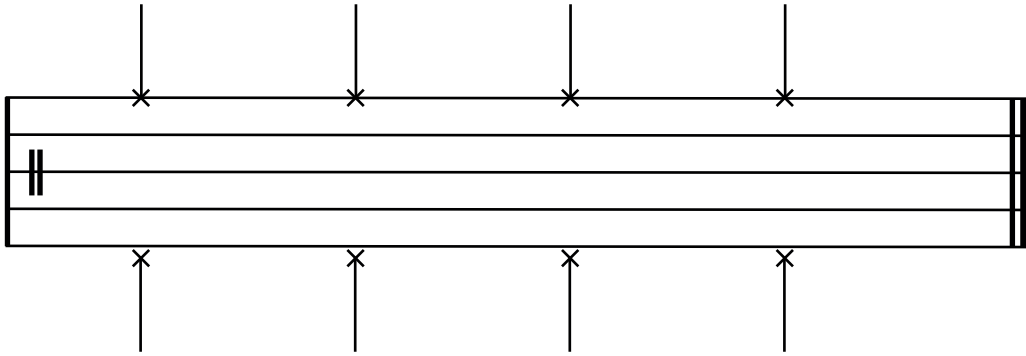


EJERCICIO 6

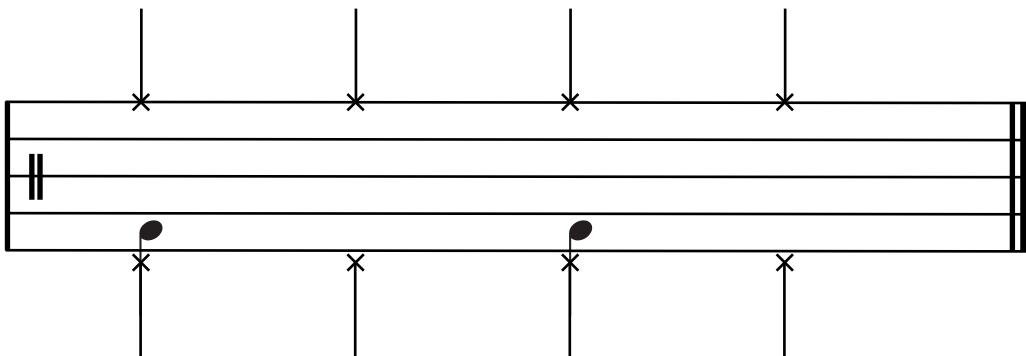


CLASE #27: VARIACIONES EN EL HIT HAT

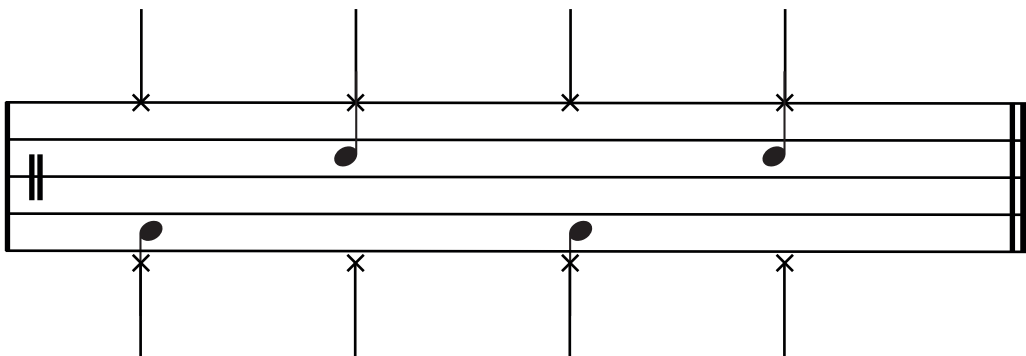
EJERCICIO 1



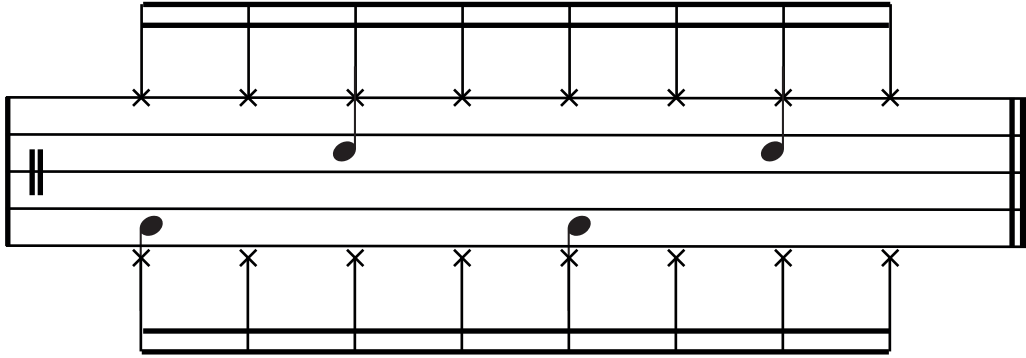
EJERCICIO 2



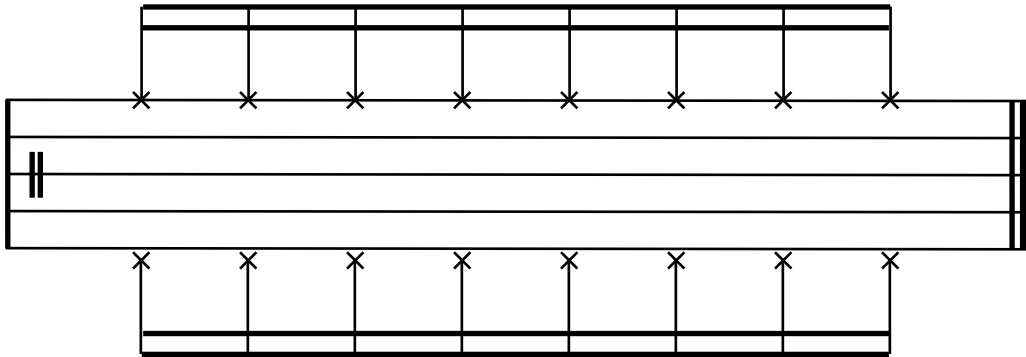
EJERCICIO 3



EJERCICIO 4



EJERCICIO 5



CLASE #30: PARADIDDLES

EJERCICIO 1

R L R R L R L L R L R R L R L L

A musical staff with a double bar line at the beginning. The staff contains 16 eighth notes grouped into four sets of four. Above the notes are the letters R, L, R, R, L, R, L, L, R, L, R, R, L, R, L, L.

EJERCICIO 2

R L R L L R L R R L R L L R L R

A musical staff with a double bar line at the beginning. The staff contains 16 eighth notes grouped into four sets of four. Above the notes are the letters R, L, R, L, L, R, L, R, R, L, R, L, L, R, L, R.

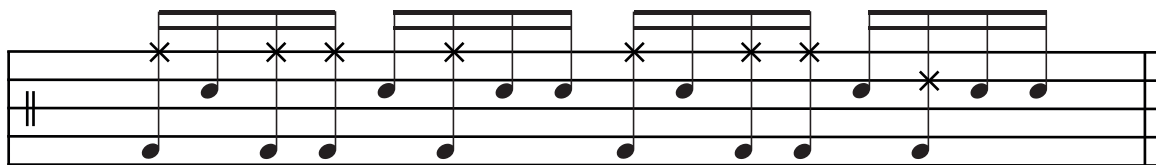
EJERCICIO 3

R L L R L R R L R L L R L R R L

A musical staff with a double bar line at the beginning. The staff contains 16 eighth notes grouped into four sets of four. Above the notes are the letters R, L, L, R, L, R, R, L, R, L, L, R, L, R, R, L.

CLASE #31: APLICACIÓN DE PARADIDDLES

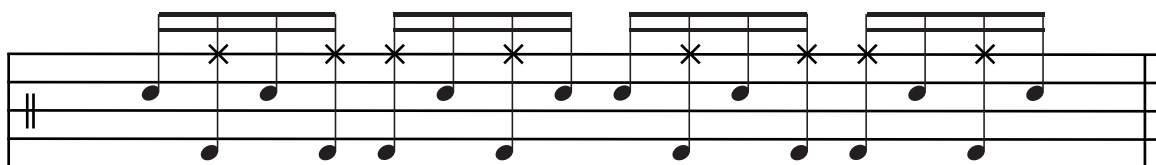
EJERCICIO 1



Musical notation for Exercise 1, consisting of two staves. The top staff contains a sequence of notes with asterisks above them, indicating specific fret positions. The bottom staff contains a sequence of notes. Below the staves is a sequence of letters: R L R R L R L L R L R R L R L L.

R L R R L R L L R L R R L R L L

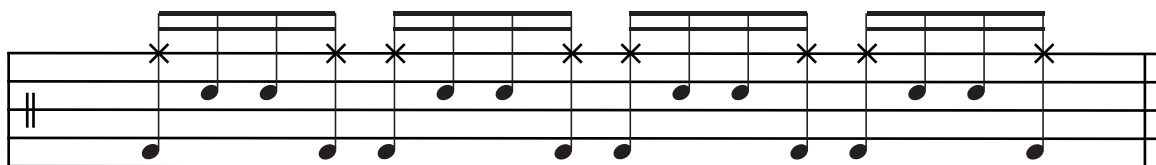
EJERCICIO 2



Musical notation for Exercise 2, consisting of two staves. The top staff contains a sequence of notes with asterisks above them, indicating specific fret positions. The bottom staff contains a sequence of notes. Below the staves is a sequence of letters: R L R L L R L R R L R L L R L R.

R L R L L R L R R L R L L R L R

EJERCICIO 3



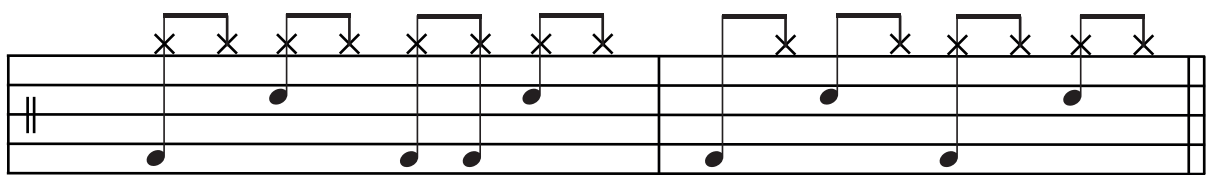
Musical notation for Exercise 3, consisting of two staves. The top staff contains a sequence of notes with asterisks above them, indicating specific fret positions. The bottom staff contains a sequence of notes. Below the staves is a sequence of letters: R L L R L R R L R L L R L R R L.

R L L R L R R L R L L R L R R L

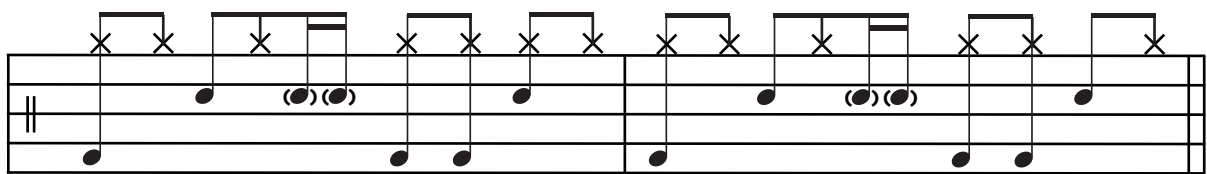
CLASE #32: NOTAS FANTASMA

EJERCICIO 1

SIN NOTAS FANTASMA

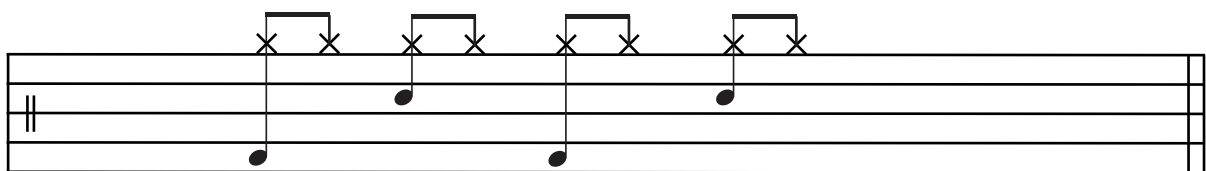


CON NOTAS FANTASMA

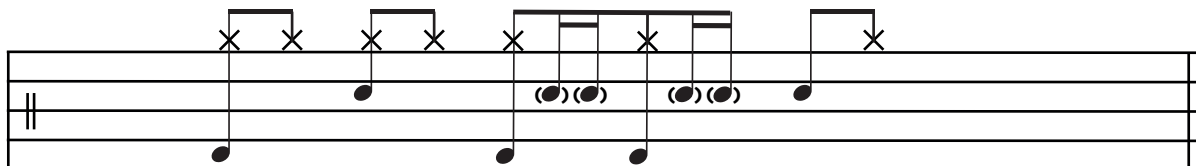


EJERCICIO 2

SIN NOTAS FANTASMA

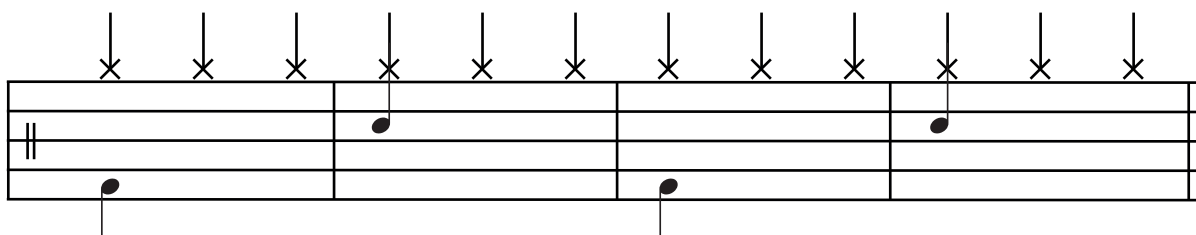


CON NOTAS FANTASMA

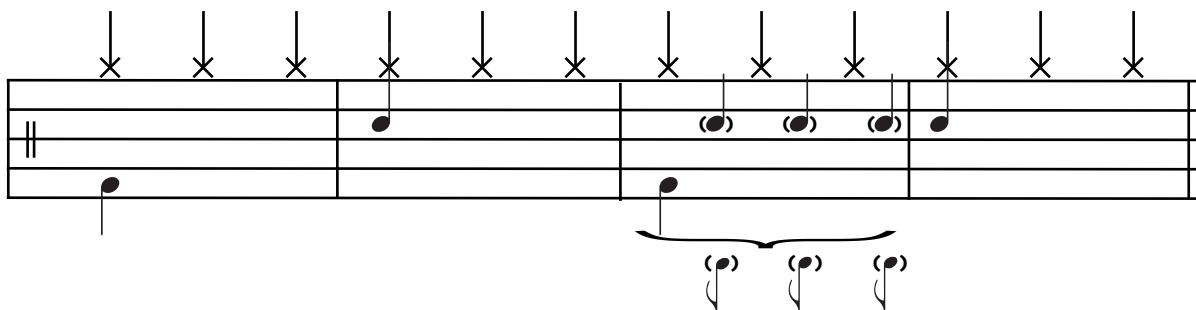


EJERCICIO 3

SIN NOTAS FANTASMA



CON NOTAS FANTASMA



CLASE #33: TRESILLO EN REDOBLE

EJERCICIO 1

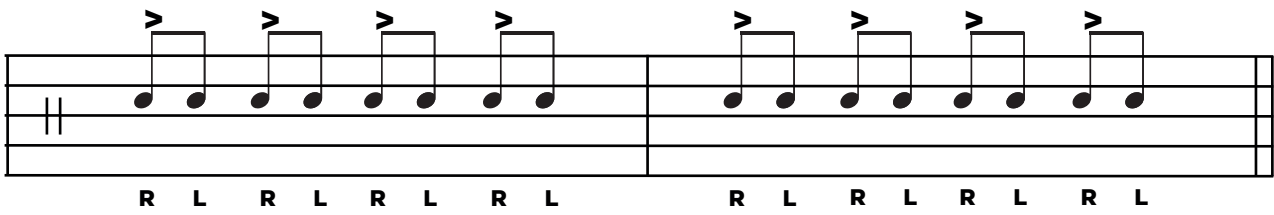
Musical notation for Ejercicio 1. The exercise is written on a double bass staff (two staves). It consists of two parts. The first part shows a triplet of eighth notes with fingerings R, L, K. The second part shows three repetitions of this triplet.

EJERCICIO 2

Musical notation for Ejercicio 2. The exercise is written on a double bass staff (two staves). It consists of two parts. The first part shows a triplet of eighth notes with fingerings R, L, K. The second part shows three repetitions of this triplet, with X marks above the first two notes of each triplet.

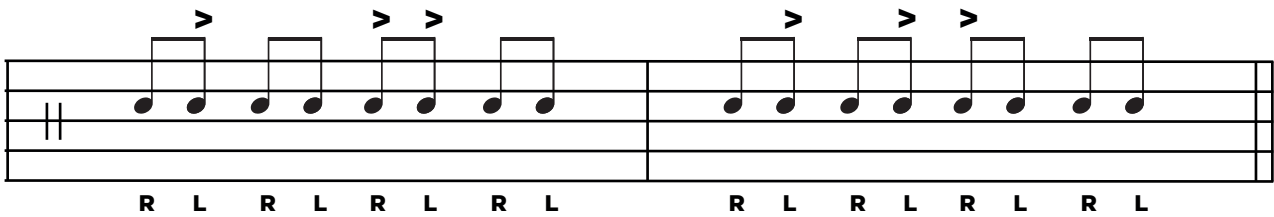
CLASE #35: ACENTOS

EJERCICIO 1



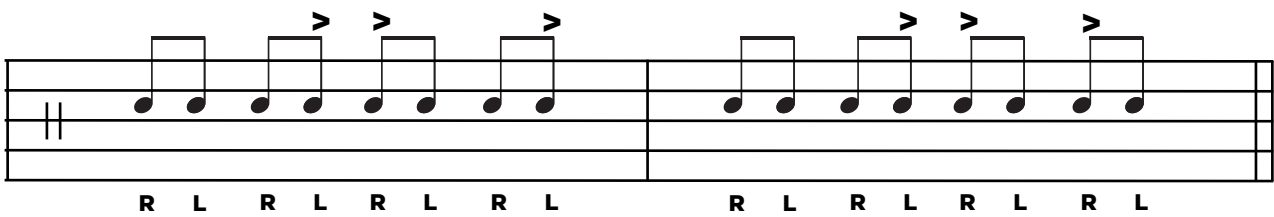
Musical notation for Ejercicio 1. It consists of two measures on a five-line staff. The first measure contains four eighth notes with accents (>) on the first, third, and fourth notes. The second measure contains four eighth notes with accents (>) on the first, second, and third notes. Below the staff, the fingerings are indicated as R L R L R L R L for the first measure and R L R L R L R L for the second measure.

EJERCICIO 2



Musical notation for Ejercicio 2. It consists of two measures on a five-line staff. The first measure contains four eighth notes with accents (>) on the first and third notes. The second measure contains four eighth notes with accents (>) on the first, second, and third notes. Below the staff, the fingerings are indicated as R L R L R L R L for the first measure and R L R L R L R L for the second measure.

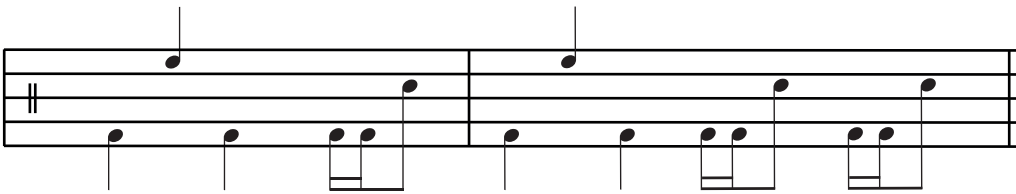
EJERCICIO 3



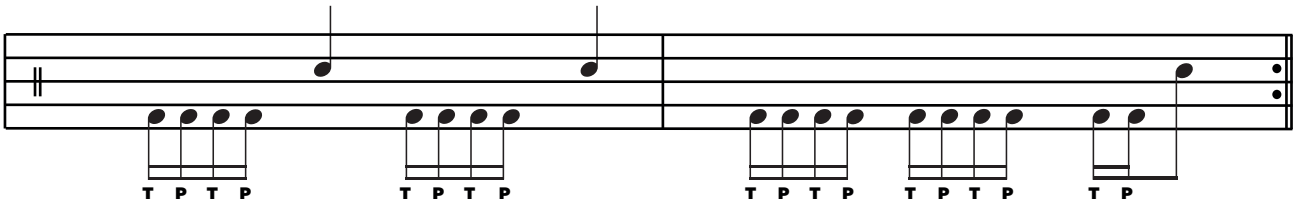
Musical notation for Ejercicio 3. It consists of two measures on a five-line staff. The first measure contains four eighth notes with accents (>) on the second and third notes. The second measure contains four eighth notes with accents (>) on the first, second, and third notes. Below the staff, the fingerings are indicated as R L R L R L R L for the first measure and R L R L R L R L for the second measure.

CLASE #25: DOBLE GOLPE EN EL BOMBO

1. SLIDE (JALADA)



2. HEEL AND TOE (TALÓN Y PUNTA)



3. UP AND DOWN (ARRIBA Y ABAJO)

